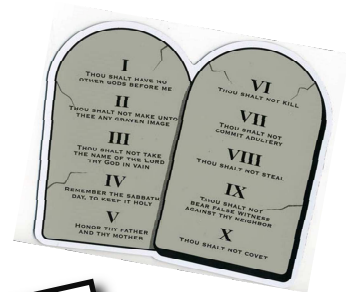


the : tablet

tabernacle : penarth

purpose: to reflect God's love in our church, community and world.



Arcot Street Project Update (April 2015)

Since Tabernacle purchased the property at the corner of Arcot Street and Plassey Street in the middle of February, we have been meeting with builders and architects and with experts in providing services to those in need to find out how best to adapt the property.

From May 18th you will see building work starting over the road as Reynolds the Builders begin work. Scaffolding will go up around the building and their first job is to make the building completely watertight. Currently there is water ingress through poor pointing and cracked render and there are a number of places where the guttering is causing damp. At the same time they will deal with the extraneous metal work and plumbing on the outside of the building and also remove the Blades signs. Having got the outside of the building into a good condition they will also prepare the downstairs shop area for use.

The wiring and plumbing will be sorted out and the shop area downstairs decorated. Our hope was that we would be ready to move in on Pentecost Sunday but it seems possible that date may slip by a week or so. It could be that we have the official opening on Pentecost Sunday but work will not actually begin in the new building until a week or two later.

We have been consulting carefully with an architect about how best to use the upstairs space. At the same time there is an exciting new venture in Wales for working amongst those in need in our community.



However, I am not able to share details of this yet as it has not been made public. In September Ignite will be holding a launch event for new work that they will be undertaking in Wales amongst the poor and I am delighted to say that we are in conversation with them about how we might be involved with them and another national organisation.

The project that will be announced by Ignite in September won't be up and running for a year or two, so we need to think about how to best use the upstairs space in the

immediate future and also in the medium to long-term. To this end the architect is advising us to apply for planning permission and do a good job of converting the property into three separate flats. For the next 18 months or so they will then provide a revenue stream to the church to help pay for the ministry downstairs and work that needs doing.

After 18 months we can then look again at the property and how it is being used and see how it matches up to the emerging work that we will be doing amongst the poor by that time. The architect has been asked to specifically look at ways to convert the property into three flats so that it could potentially be made into one community house in the future if that is what serves us best.

I realise that this second part of the project involving the flats sounds vague. The reason is simply this – I am not clear what God is calling us to at the moment. You will recall that throughout this whole project I have been clear that God is telling us to take one step at a time. As we faithfully fulfil each step He then will reveal the next move that we are to make. At the moment we are concentrating on getting the shop up and running. My belief is that as He has done over the last year and a half, God will show us the next step once that one is completed. Please pray.

We are still looking at all of the figures but it seems possible that there may be a funding gap between what we have in reserve and what the flats will require spending on them if we follow the architects advice. It is clear that they will generate a good income once they are occupied but we need to think carefully about how we provide the money up front. This is especially important as the original plan launched in 2013 was intended to be completely self financing from the sale of Clive Place. We are applying to a number of charities and organisations and also to the Baptist Union Building Fund asking for assistance. Already in the last week we have had good news from one fund and an offer of £2,500.

When we began the project we told the church that the intention was that it would be revenue-neutral. However, as you are

aware we realised less money on the manse in Clive Place than we initially anticipated and so have been stretched throughout the whole process. Again we require your prayers as we move forward on this matter.

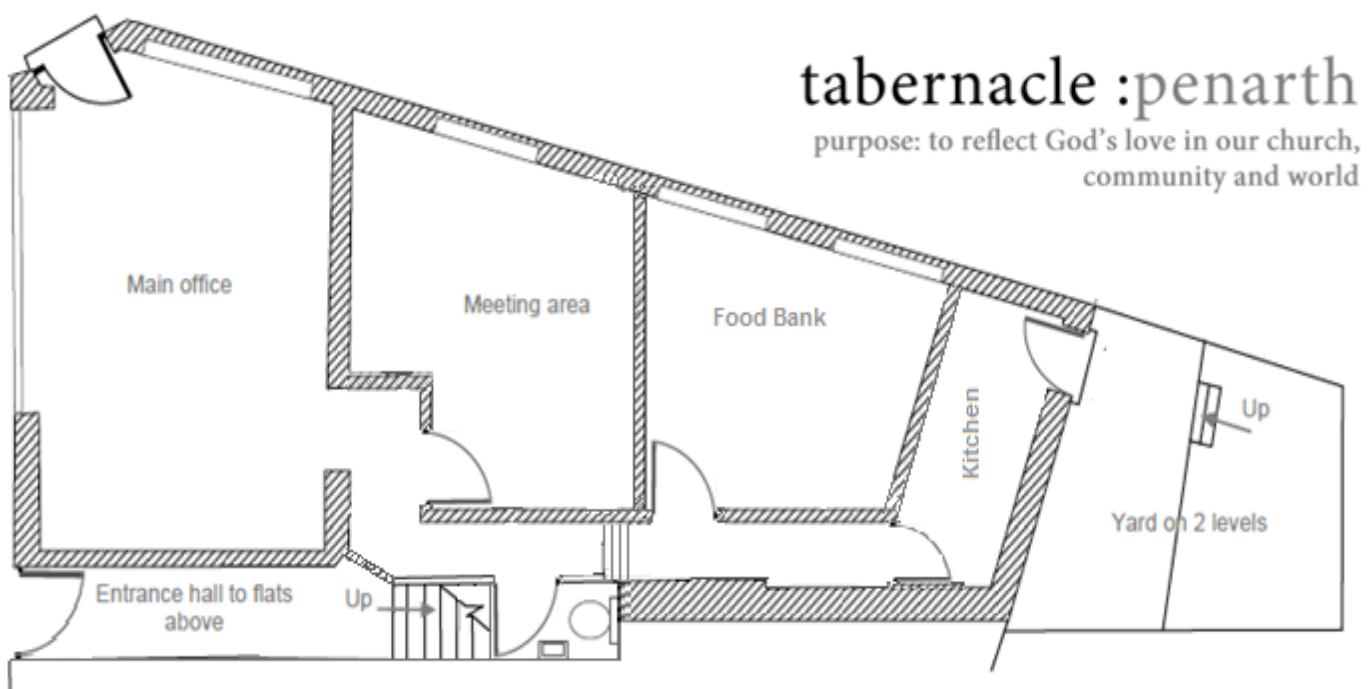
Pastor Jonathan continues to negotiate with Christians Against Poverty (CAP) and work out how we can bring all of their services on line in our new building. We have a number of volunteers who are excited and keen to work in the shop once it is up and running. Around the town there is a real buzz about what is going on and people are saying that if you need help Tabernacle is the place to go.

Over the last few months we have started to see Home Access and food bank clients beginning to attend worship and most recently have seen two conversions from Home Access clients - this is all very exciting. However, as we move forward we can be sure that

the enemy will also want to sow discord and confusion in our camp. Once again let me ask you to pray as we move forward.

Can I take this opportunity to thank you for your support and your graciousness over the last year and a half or more as we sought to advance with this project? In a church the size of Tabernacle there will always be varying views on what is the best way forward. Also, because of the way we believe that God has led us, the path ahead has not always been as clear as we may have liked it to be! However, I hope that we can all agree that God has been faithful thus far. We are not seeking our own will and our own preference's, but the mind of Christ. As much as we need money let me emphasise how much we need your prayers. Please do join me as we move forward in the next stages of this exciting venture.

Pastor Roger Grafton



Potential layout for ground floor—other possibilities being considered